



EVE DIAPOL SL20

Diamond impregnated polishing disc with a 0,2mm thickness

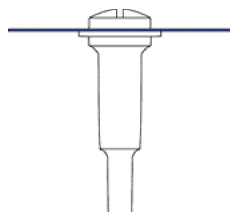
EVE Diapol SL20 is a new diamond interspersed polisher, with an edge thickness of only 0,2mm and very hard synthetic rubber bonding. This specific shape and composition makes this polisher especially suited for interdental applications. It facilitates the polishing of porcelain and metal-ceramic treatments in difficult to reach areas.

Furthermore EVE Diapol is suited for treatment of approximal embrasures, ceramic bridges, inlays and fissures. High-quality abrasives and a very hard bonding make a combination of excellent polishing results and increased durability possible. The fine tuned three-step polishing system gives high-lustre results in minimal time.

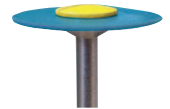
EVE Diapol SL20 polishers expand the successful Diapol polishing series for porcelain and metals and are available in the corresponding grit sizes coarse, medium and fine.

A high flexible full diamond synthetic disc for moulding and pre-polishing.

Thickness 0,2mm

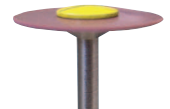


Grit: coarse
RPM: 5.000 - max. 10.000 min-1
Pack: 1, 10 pieces



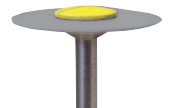
| | |
|------------------------------------|---------------------|
| Item: | SL20Dg |
| Item No.: | |
| Sizes (mm) / Medical Device Class: | 20 x 1/- |
| ISO-No.: | 803 104 303 534 200 |

Grit: medium
RPM: 5.000 - max. 10.000 min-1
Pack: 1, 10 pieces



| | |
|------------------------------------|---------------------|
| Item: | SL20Dmf |
| Item No.: | |
| Sizes (mm) / Medical Device Class: | 20 x 1/- |
| ISO-No.: | 803 104 303 524 200 |

Grit: fine
RPM: 5.000 - max. 10.000 min-1
Pack: 1, 10 pieces



| | |
|------------------------------------|---------------------|
| Item: | SL20D |
| Item No.: | |
| Sizes (mm) / Medical Device Class: | 20 x 1/- |
| ISO-No.: | 803 104 303 514 200 |

Advantages:

- Hard and very thin diamond interspersed polishing disc
- Enables polishing of difficult to reach areas
- Excellent polishing results in short time

Recommendations for use:

- Recommended speed: 7.000 - 12.000 RPM
- Excellent results with reduced polishing pressure and material loss
- Adhere to all safety regulations